

**RAB5C Antibody (C-term)**  
**Affinity Purified Rabbit Polyclonal Antibody (Pab)**  
**Catalog # AP13450b****Specification**

---

**RAB5C Antibody (C-term) - Product Information**

Application	IHC-P, WB,E
Primary Accession	<a href="#">P51148</a>
Other Accession	<a href="#">Q58DS9</a> , <a href="#">NP_004574.2</a> , <a href="#">NP_958842.1</a>
Reactivity	Human
Predicted	Bovine
Host	Rabbit
Clonality	Polyclonal
Isotype	Rabbit IgG
Calculated MW	23483
Antigen Region	178-207

**RAB5C Antibody (C-term) - Additional Information****Gene ID** 5878**Other Names**

Ras-related protein Rab-5C, L1880, RAB5L, RAB5C, RABL

**Target/Specificity**

This RAB5C antibody is generated from rabbits immunized with a KLH conjugated synthetic peptide between 178-207 amino acids from the C-terminal region of human RAB5C.

**Dilution**

IHC-P~~1:10~50

WB~~1:1000

E~~Use at an assay dependent concentration.

**Format**

Purified polyclonal antibody supplied in PBS with 0.09% (W/V) sodium azide. This antibody is purified through a protein A column, followed by peptide affinity purification.

**Storage**

Maintain refrigerated at 2-8°C for up to 2 weeks. For long term storage store at -20°C in small aliquots to prevent freeze-thaw cycles.

**Precautions**

RAB5C Antibody (C-term) is for research use only and not for use in diagnostic or therapeutic procedures.

**RAB5C Antibody (C-term) - Protein Information****Name** RAB5C ([HGNC:9785](#))

## Synonyms RABL

**Function** The small GTPases Rab are key regulators of intracellular membrane trafficking, from the formation of transport vesicles to their fusion with membranes. Rabs cycle between an inactive GDP-bound form and an active GTP-bound form that is able to recruit to membranes different sets of downstream effectors directly responsible for vesicle formation, movement, tethering and fusion.

## Cellular Location

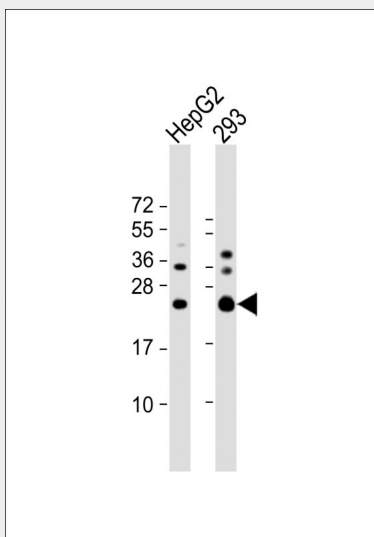
Cell membrane {ECO:0000250|UniProtKB:P20339}; Lipid-anchor {ECO:0000250|UniProtKB:P20339}; Cytoplasmic side {ECO:0000250|UniProtKB:P20339}. Early endosome membrane {ECO:0000250|UniProtKB:P20339}; Lipid-anchor {ECO:0000250|UniProtKB:P20339}. Melanosome. Note=Identified by mass spectrometry in melanosome fractions from stage I to stage IV

## RAB5C Antibody (C-term) - Protocols

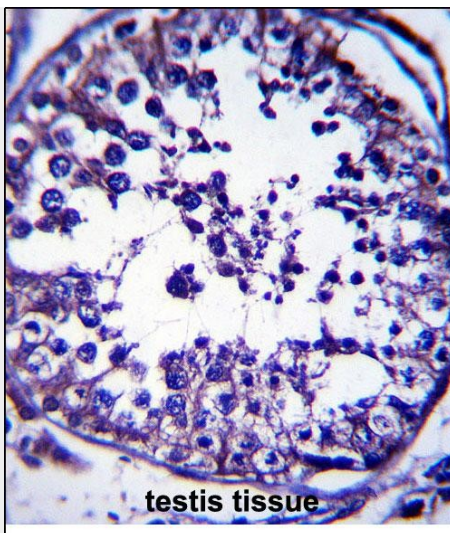
Provided below are standard protocols that you may find useful for product applications.

- [Western Blot](#)
- [Blocking Peptides](#)
- [Dot Blot](#)
- [Immunohistochemistry](#)
- [Immunofluorescence](#)
- [Immunoprecipitation](#)
- [Flow Cytometry](#)
- [Cell Culture](#)

## RAB5C Antibody (C-term) - Images



All lanes : Anti-RAB5C Antibody (C-term) at 1:1000 dilution Lane 1: HepG2 whole cell lysate Lane 2: 293 whole cell lysate Lysates/proteins at 20 µg per lane. Secondary Goat Anti-Rabbit IgG, (H+L), Peroxidase conjugated at 1/10000 dilution. Predicted band size : 23 kDa Blocking/Dilution buffer: 5% NFD/MTBST.



RAB5C Antibody (C-term) (Cat. #AP13450b) immunohistochemistry analysis in formalin fixed and paraffin embedded human testis tissue followed by peroxidase conjugation of the secondary antibody and DAB staining. This data demonstrates the use of RAB5C Antibody (C-term) for immunohistochemistry. Clinical relevance has not been evaluated.

#### **RAB5C Antibody (C-term) - Background**

Members of the Rab protein family are small GTPases of the Ras superfamily that are thought to ensure fidelity in the process of docking and/or fusion of vesicles with their correct acceptor compartment (Han et al., 1996 [PubMed 8646882]).

#### **RAB5C Antibody (C-term) - References**

- Ewing, R.M., et al. Mol. Syst. Biol. 3, 89 (2007) :
- Chi, A., et al. J. Proteome Res. 5(11):3135-3144(2006)
- Merithew, E., et al. J. Biol. Chem. 278(10):8494-8500(2003)
- Clemens, D.L., et al. Infect. Immun. 68(5):2671-2684(2000)
- Bucci, C., et al. Biochem. Biophys. Res. Commun. 258(3):657-662(1999)